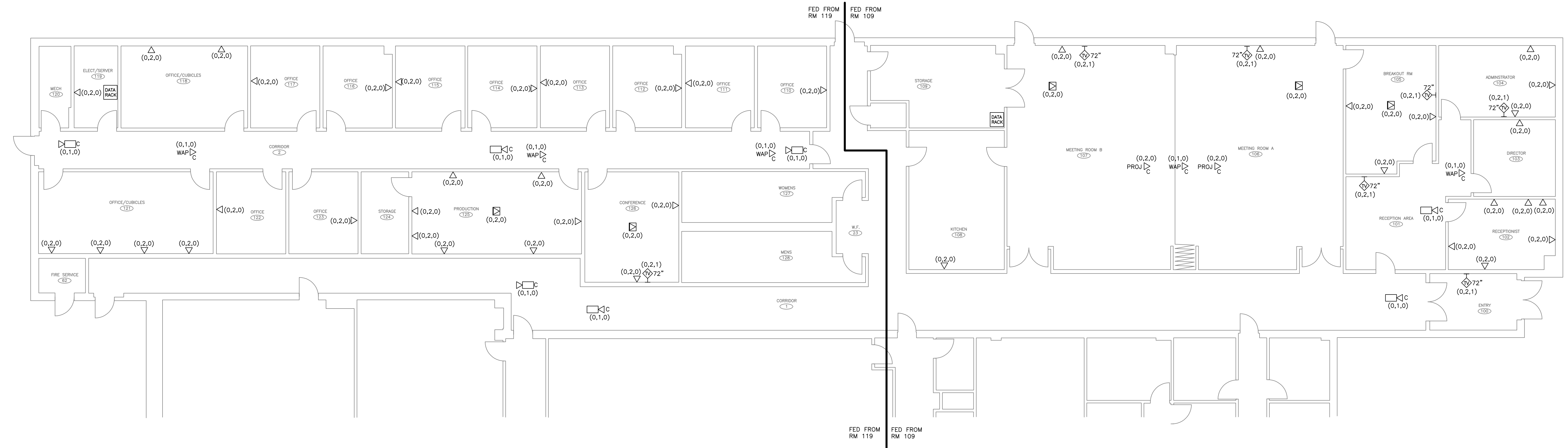


- NOTES:
1. CAT6A FOR ALL WAPS
  2. CAT6 FOR ALL OTHER DROPS
  3. INSTALL 12 STRAND OM3 MM BACKBONE FIBER BETWEEN ROOMS 119 AND 109



**Cable Drop Detail - Main Level**  
 SCALE: 1/8" = 1'

HISTORY AND REVISIONS		
DATE	BY	DESCRIPTION

**ESU-13 OFFICE ADDITION - SIDNEY**  
**WESTERN NEBRASKA**  
**COMMUNITY COLLEGE**  
 371 COLLEGE DRIVE  
 SIDNEY, NE

SHEET TITLE  
**FLOOR PLAN**

SHEET NUMBER  
**1**

PLOT DATE: 02/17/20    SHEET 1 OF 1  
 SCALE: 1/8"=1'-0"    FILE NAME: X.dwg